

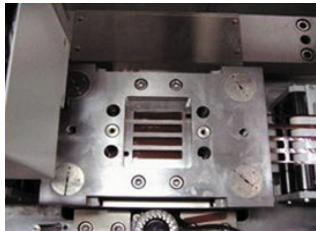
Applications

The FPC Flexible Print Circuit machine is an advanced machine for laminating the stiffener with hot melt tape onto the flexible print circuit to reinforce the FPC, and use the unique CCD vision system to enhance lamination accuracy. The FPC machine cut the shape of stiffener with male and female die, and pick up the stiffener and place it onto the FPC, it is driven by X-Y axis table, then bonding and rewinding to the roll.

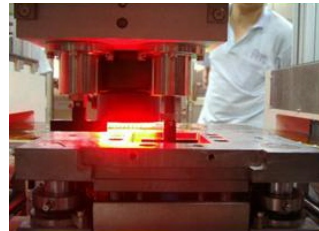
Features

- Male and Female Die for stiffener cutting operation
- Unique CCD vision system ensures precise alignment
- Servo motor for position control
- High speed X-Y table(96M/min)
- Laminating time 2.0sec/1 pc

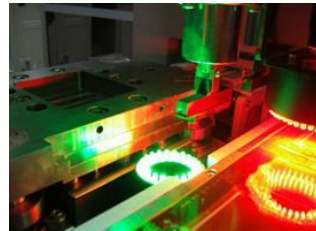
Working process



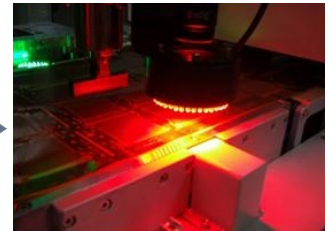
Pull the material and then cut by male and female die



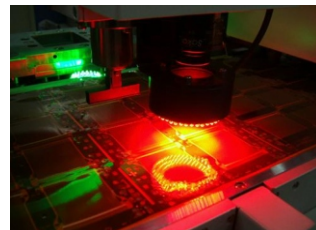
Pick up the stiffener and place it onto the FPC



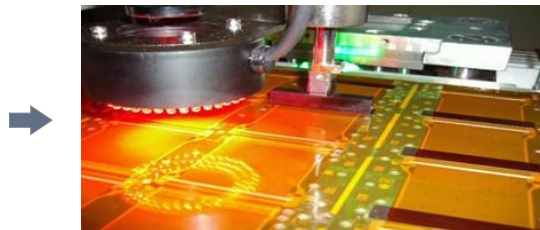
Ensures precise alignment of the stiffener by CCD vision system



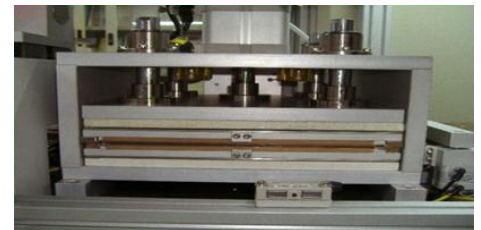
Ensures precise alignment of the FPC by CCD vision system



To search the target



Bonding the stiffener and FPC



Laminaing the stiffener and FPC

Specifications

FPC

Model	FPC		
Dimension(mm)	L2600D1118H1626	Cutting power	1.5kw servo motor
Weight	3000 kgs	Cutting force	3 ton
Capacity	1pcs 2ses		
Rewind I		Rewind II	
Rewind	6"W320 air shaft	Rewind	3"W100 air shaft
Material size	L300D250	Material size	L200D80
Material weight	30kg	Material weight	5kg
Motor	60W+R75	Motor	60W+75R