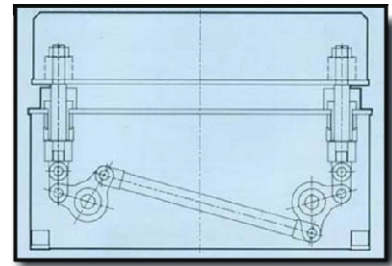


### Range of applications

The machine has a wide range of application for sheet & roll material, specially designed for floor tile industry. It is equipped for sheet / roll material or in line.

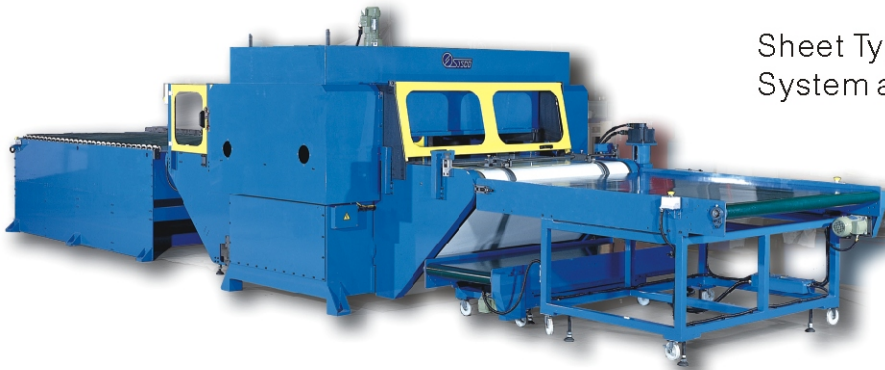
### Advantage

- In line or roll material loop control with select switch for in line cutting.
- The high precision 4 post mechanical stops ensures an accurate cutting depth.
- P.P. pad with pad shifter for lengthening the lifetime of the pad.
- Servo motor position system ensures position accuracy  $\pm 0.2\text{mm}$ .
- Cut parts separate inspection and collection conveyor belt as customer's request.
- Waste separate and tilting conveyor belt as customer's request.
- User friendly GP touch screen display panel operating system.
- Tool die mount/dismount roller fitting device for easy change.
- CE approved full machine safety guard.
- Four column, two hydraulic cylinders and double mechanical balance system.



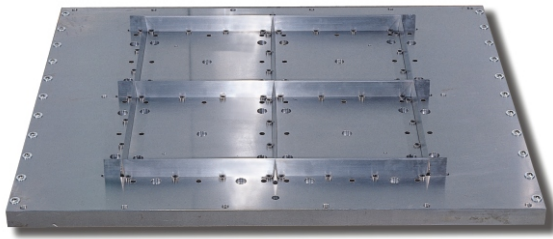
### Model: FT-ABC-150 FRJ

Sheet Type or In Line Carpet Tile Auto Cutting System and cut parts separation conveyor

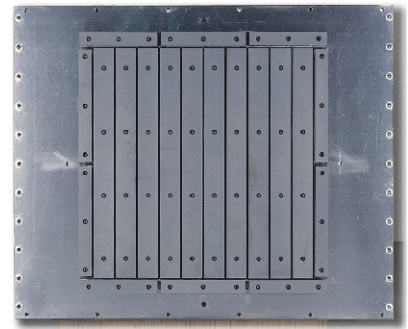


- Cutting force : 150 Tons
- Angled roller feeding table
- Fixed clamping beam with stopper bar for sheet edge guiding
- Edge Guiding device on the conveyor belt of inboard side
- Motorized 4 post mechanical stops
- Cutting on belt feeding roller driven system
- High speed hydraulic system
- 3 HP servo motor position system
- Outboard scrap web separation device and waste conveyor belt
- Finished products feed out conveyor belt
- G.P. Touch screen display panel
- Tool die as per customer's request
- Inboard fence and outboard hinged safety guard

## Tool Die

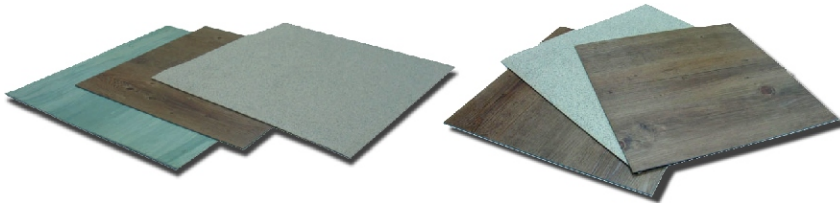


450 x 450mm x 2 by 2 rows tooling die

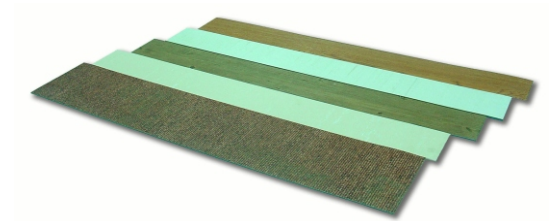


3" x 36" x 10 rows tooling die

## Products



Floor tiles



Floor Skirting tiles

## Optional:

- Two projector lamps for sheet type material loading position.

## Specifications

Model	ABC-40	ABC100	ABC-150	RBC-60
Cutting force	40 tons	100tons	150tons	60tons
Open daylight (head to bed)	110~220mm	110~220mm	110~220mm	110~220mm
Down speed	140mm/sec	100mm/sec	100mm/sec	120mm/sec
Up speed	120mm/sec	90mm/sec	90mm/sec	100mm/sec
Cutting Speed	20mm/sec	15mm/sec	15mm/sec	28mm/sec
Machine bed	1200x1600mm or more	1200x2300mm or more	1300x2300mm or more	900x1600mm or more
Main motor	5HP	15HP	15HP	7.5HP
Dimension	2500x1200x1480mm	3000x1700x2000mm	2725x1485x1710mm	2500x2520x1600mm
Net weight	2,700kgs	6,000kgs	7,500kgs	4,800kgs

- Dimensions and net weight for machine only without feeder.
- Special cutting area, stroke and cutting force are available upon request.